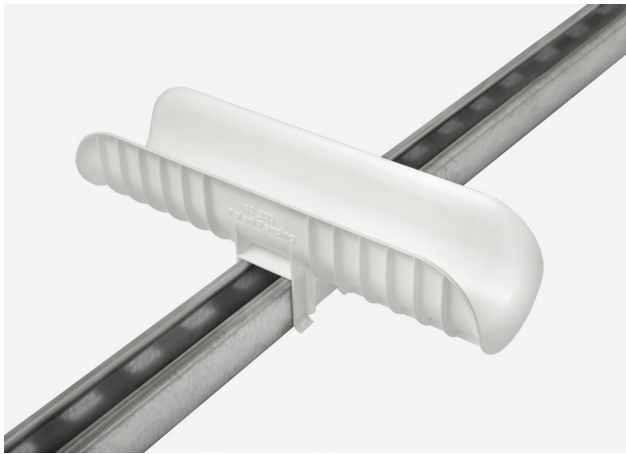


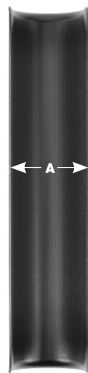
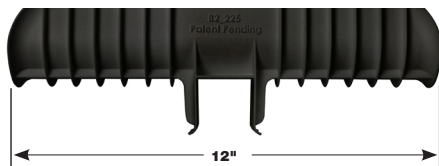


Bronco II® Insulation Tube & Pipe Saddle



Key Features:

- **Universal mounting feature**
allows secure fit on either side of channel
- Molded with self-tapping screw location hole
- **UL Classified 2043 Flame Spread/Smoke Index for use in air handling systems**
- Manufactured from high-strength Polypropylene Copolymer
- **Extra strength ribbed side walls**
- No assembly or tools required
Enhanced safety lip prevents insulation crushing and tearing from pipe movement
- **UV Resistant**
- Available in black and white to match insulation
- Excellent finished appearance
- **Made in the U.S.A.**



PART NO. BLACK	PART NO. WHITE	DIMENSION A
225B2S	225W2S	2-1/4"
325B2S	325W2S	3-1/4"
425B2S	425W2S	4-1/4"
525B2S	525W2S	5-1/4"
625B2S	625W2S	6-1/4"
825B2S	825W2S	8-1/4"