



# DRIRITE

*Absorbents for Industry*

## DREPACKING

A Division of DRI Inc., Inc.

P.O. Box 1378  
Crystal Lake, Illinois 60014-1378

## 1. PRODUCT IDENTIFICATION

MSDS Number: 100300.0  
Identity: Finnr Absorbent, CTA50  
Issued: March 19, 1999  
Chemical Name: Fullers Earth

Attapulgitic Clay  
Manufacturer: Oil Dri Corporation  
Address: 410 N. Michigan Ave.  
Chicago, IL 60611  
Emergency: (800)424-9300

## 2. COMPOSITION

Component	CAS Number	Amount	Exposure Limit
Fullers Earth	8031-18-3	80-90%	PEL - 5 mg/m <sup>3</sup> TWA (respirable fraction) TLV - 3 mg/m <sup>3</sup> TWA (respirable fraction) TLV - 10 mg/m <sup>3</sup> TWA (inhalable dust)
Quartz (crystalline silica) 3-6% respirable	14808-60-7	10-20% bulk	PEL - 10 mg/m <sup>3</sup> %SiO <sub>2</sub> +2 TWA TLV - 0.1 mg/m <sup>3</sup> TWA

PEL-OSHA Permissible Exposure Limit. TLV - American Conference of Governmental Industrial Hygienists (ACGIH) Threshold Limit Value.  
TWA - 8 hour Weighted Average. STEL - Short Term Exposure Limit.

## 3. HAZARDS IDENTIFICATION

### EMERGENCY OVERVIEW

This product is a non-combustible, chemically inert mineral. This mineral sample contains a small amount of naturally occurring crystalline silica as quartz. Prolonged overexposure to respirable crystalline silica may cause lung disease (silicosis). IARC, in Monograph 68, has concluded that crystalline silica inhaled in the form of quartz from occupational sources is carcinogenic to humans (Group 1); however, carcinogenicity was not detected in all industrial circumstances studied. Because applications and exposure data indicate that exposure to respirable quartz in this product with normal use is well below the OSHA Permissible Exposure Limit (PEL) and ACGIH Threshold Limit value (TLV); and because the company is not aware of any scientific or medical data available indicating that exposure to dust from this product under conditions of normal use will cause silicosis or cancer, adverse affects would not be expected from normal use of this product.

### HEALTH HAZARDS

INGESTION: No adverse effects expected with unused material

INHALATION: Inhalation of excessive concentrations of dust may cause irritation of mucous membranes and upper respiratory tract.



# DRIRITE

*Aluminum's for Industry*



**EYE:** Contact may cause mechanical irritation and possible injury.

**SKIN:** No adverse effects expected.

**SENSITIZATION:** No adverse effects expected.

#### **CHRONIC / CARCINOGENICITY:**

Inhalation of excessive concentrations of any dust, including this material, may lead to lung injury. This product contains crystalline silica. Excessive inhalation of respirable crystalline silica may cause silicosis, a progressive, disabling and fatal disease of the lung. Symptoms may include cough, shortness of breath, wheezing and reduced pulmonary function. The international Agency for Research on Cancer (IARC), in Monograph 68 has concluded that crystalline silica inhaled in the form of quartz or cristobalite, from occupational sources, is carcinogenic to humans (Group 1). However, in making the overall evaluation, the Working Group noted that carcinogenicity was not detected in all industrial circumstances studied. Carcinogenicity may be dependent on inherent characteristics of the crystalline silica or on external factors affecting its biological activity or distribution of its polymorphs. The National Toxicology Program (NTP) classifies crystalline silica as reasonably anticipated to be a carcinogen. Because applications and exposure data indicate that exposure to respirable quartz in this product, with normal use, is well below the OSHA Permissible Exposure Limit (PEL) and ACGIH Threshold Limit Value (TLV); and because the company is not aware of any scientific or medical data available indicating that exposure to dust from this product under conditions of normal use will cause silicosis or cancer, adverse effects would not be expected from normal use of this product.

#### **MEDICAL CONDITIONS AGGRAVATED BY EXPOSURE:**

None currently known

### **4. FIRST AID MEASURES**

**EYE:** Immediately flush eyes with cool running water, lifting upper and lower lids. If irritation persists or foreign body in the eye, get immediate medical attention.

**SKIN:** None needed for normal use.

**INGESTION:** If used material is ingested, get medical attention due to possibility of chemical contamination. If large amount of unused material is swallowed, get immediate medical attention.

**INHALATION:** Remove to fresh air.

### **5. FIREFIGHTING MEASURES**

**FLASH POINT:** This product is not combustible.

**FLAMMABLE LIMITS:** Not Applicable.

#### **EXTINGUISHING MEDIA:**

Use media that is appropriate for surrounding fire.

#### **UNUSUAL FIRE OR EXPLOSION HAZARDS:**

None

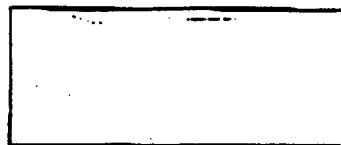
#### **SPECIAL FIREFIGHTING INSTRUCTIONS:**

None required.



# DRIRITE

*Absorbents for Industry*



## HAZARDOUS COMBUSTION PRODUCTS:

None

## 6. ACCIDENTAL RELEASE MEASURES

Sweep up and collect for re-use or disposal.

## 7. HANDLING AND STORAGE

**HANDLING:** Avoid breathing dust. If clothing becomes dusty, launder before re-use.

**STORAGE:** Store in a dry area.

## 8. EXPOSURE CONTROLS / PERSONAL PROTECTION

### EXPOSURE GUIDELINES:

Refer to section 2.

### ENGINEERING CONTROLS:

For operations where the exposure limit may be exceeded, local exhaust ventilation is recommended.

### RESPIRATORY PROTECTION:

For operations where the exposure limit may be exceeded, a NIOSH/MSHA approved high efficiency particulate respirator is recommended.

**SKIN PROTECTION:** None required for normal use.

**EYE PROTECTION:** Safety glasses or goggles recommended.

**OTHER:** None required for normal use.

## 9. PHYSICAL AND CHEMICAL PROPERTIES

### APPEARANCE AND ODOR:

Gray to tan to red granules; no odor

**PHYSICAL STATE:** Solid

**BOILING POINT:** Not applicable

**VAPOR PRESSURE:** Not applicable

**VAPOR DENSITY:** Not applicable

### SOLUBILITY IN WATER:

Insoluble

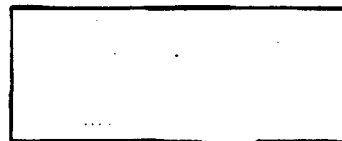
**SPECIFIC GRAVITY:** 2.2

**pH:** Not applicable



# DRI-RITE

*Alternatives for Industry*



**CERCLA / SUPERFUND:** None

**SARA HAZARD CATEGORY (311/312):**  
Chronic Health

**SARA 313:** None

**TSCA:** All of the components of this product are listed on the EPA TSCA Inventory or exempt from notification requirements.

**EINECS:** All of the components of this product are listed on the EINECS Inventory or exempt from notification requirements.

**EEC R&S PHRASES:** Not classified as Dangerous under EEC Labeling Regulations.

**JAPAN MITI:** All of the components of this product are existing chemical substances as defined in the Chemical Substances Control Law.

**AICS:** All of the components of this product are listed on the AICS Inventory or exempt from notification requirements.

**CANADIAN DSL:** All of the components of this product are listed on the Canadian Domestic Substances List or exempt from notification requirements.

**CA PROPOSITION 65:**  
This product contains respirable silica which is known to the state of California to cause cancer.

## 16. OTHER INFORMATION

**NFPA RATING:** Health = 1, Fire = 0, Reactivity = 0

**HMIS RATING:** Health = 1\*, Fire = 0, Reactivity = 0

The information in this data sheet is believed to be accurate. However, each purchaser should make its own test to determine the suitability of the product for its purposes. DRI-RITE CORPORATION MAKES NO WARRANTY, EXPRESSED OR IMPLIED, WITH RESPECT TO THE PRODUCT and assumes no responsibility for any risk or liability arising from the use of the information or the product. Statements about the product should not be construed as recommendations to use the product in infringement of any patent.

**MATERIAL SAFETY DATA SHEET**